

# Answers to Your Questions About JerseyTags

The AJCA American ID tag service—*JerseyTags*—offers three sizes of tag fronts (*female tags*) and two types of tag backs (*male tags*) from Allflex USA, for a total of five possible tag combinations: button/button, large/button, large/large, maxi/button, and maxi/large.

- All tags are printed with (1) an American ID number, (2) the state of origin, and (3) the herd management number.
- Button tags measure approximately 1¼” in width, and contain only the American ID number, state of origin, and herd management number.
- Large tags (2¼” wide) can be printed with two sizes of herd management numbers (Medium, approximately 7/8” high; and Large, 1-1/8” high). Large tags with Medium-size number have one blank line available for an imprint. This can be left blank, allowing you to handwrite sire, dam, and/or birth date information between the American ID number and the on-farm ID number.
- Maxi tags (4” wide) can be printed with two sizes of herd management numbers (Medium, approximately 1-1/8” high; and Large, 1-3/8” high). Tags with Medium-size numbers have space available for up to two lines of printing, or about 3/4” for written information. If the Large-size number is used, there is one line for an imprint or about 1/2” for writing.
- Tags are offered in white or yellow. They are printed using the laser/ink combination, which has the best combination of durability and readability.
- Herds enrolled on REAP would receive tags with the **USJersey** logomark. The *JerseyTag* logomark will be used on tags ordered by non-REAP herds.
- Custom tags may also be ordered, after the registration process is complete.

## Steps In Using Tags For Registration

Using tags for permanent ID means placing an approved, tamperproof American ID tag in each ear of the calf as soon as it is born. Therefore, you need a supply, or *inventory*, of approved tags on hand at all times. Any of the five combinations of tag fronts and backs can be used for inventory tags.

Inventory tags must be *ordered in pairs* because both ears will need to have a tag when the animal is registered.

However, both ears do not need to have the same size and style of tag. For example, one ear can have a button/button tag and the other ear can have a maxi/large tag.

**Do I have to use Allflex Tamperproof™ tags in both ears to meet the registration requirement?**

Yes.

**How do I order tags from USJersey/AJCA?**

You can order your inventory by mail, phone or fax, or by logging on the Herd Options section of infoJersey.com. In placing your order, you need to specify (1) the combinations of fronts and backs you want to use, (2) color, (3) the number you want to stock, and (4) the on-farm ID number for the first tag (*e.g., 501*).

If you order 500 tag sets, for example, and the first tag has on-farm ID of 501, the AJCA will assign an American ID number to 501, the next American ID number to 502, and so on.

Inventory tags will be manufactured with the on-farm ID, the American ID number, the state, and depending on tag size, the logomark **USJersey** if you are a REAP herd, or *JerseyTag* if not.

Then, as soon as a calf is born, put one of the inventory tags in one ear and the matching tag in the other ear.

**How will the registration process work?**

On the registration application, you would list the American ID number with the calf’s name, date of birth, sire and dam, and so on. The American ID number will be used as the registration number in the AJCA Herd Register.

**What is “tamperproof” about these eartags?**

Allflex tags are considered tamperproof because the front (*female*) of the tag is sealed at the end, opposite of where the back (*male*) of the tag is inserted. The tag can only be separated if this seal is cut.

**What are the advantages and disadvantages of the different tag components?**

Let’s start with button tags. Button tags are most permanent, least visible, and least expensive. They would only be used as inventory tags or as the backs to large or maxi tags.

Button tags when used together (*front and back, as pictured on back*) are essentially a plastic tattoo. They may be easier to put in ears than tattoos and up close they are probably easier to read than tattoos. But they will not serve the purpose of visible ID for DHIA or even on farm use.

The button/button tag combination works well in one ear as a low-cost permanent ID, when visible ID in the form of a large or maxi tag is only needed in one ear. The button tags also work well for the backs of large or maxi tags when the animal does not need visible ID from behind.

**What is the difference between the “large” and “maxi” tags?**

Size. Large tags are 2¼” wide. Maxi tags measure almost 4” wide.

**Tell me more about the large tags.**

Large tags are more visible and more expensive ID than button tags, but not as visible as maxi tags and not as expensive.

Large tags will only be used as inventory tags and will provide visible ID. In addition, large tags will have one blank line for producers to hand-write other pertinent data such as birth date, sire or dam if they do not want to go to the expense of ordering and paying for a custom maxi tag following registration.

When visible ID is only needed from the front, then a button tag can be used for the back. When visible ID is needed both front and back, then a large tag would be used for the back, too.

**And what about maxi tags?**

Maxi tags are the most visible ID. They are the *only* tag used for *custom* tags and are the most expensive.

Maxi tags are the largest tags and, therefore, provide the most room for printing CCNs (*computer control numbers*) and other  
(continued on back)

## Identification Requirements for AJCA Registration

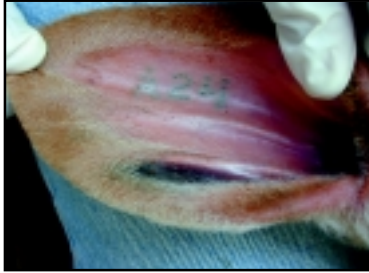
Rule II, Identification, of the *Rules for the Registration and Transfer of Jersey Cattle*

### Identification

#### Sec. 2

##### (a) For Animals Identified by Tattoos

All calves identified by tattoos must be tattooed before leaving individual pens or ties. One or both ears may be used, and the letter and numbers in the ears must be stated on the application for registration. No two animals of the same sex in the same herd may have the same tattoo. Tattoos must include at least one letter and one number. The letters I, O, Q and V may be used only if accompanied by an additional letter in the same ear, or approved by the Executive Secretary.



Valid Tattoo

Tattoos may not exceed a total of seven letters and numbers in each ear. It is the owner's responsibility to maintain a valid and legible tattoo in the ear of each animal owned.

When a tattoo correction is required, the owner must notify the AJCA of the correction, which will then be made in the records of the Association.

When a tattoo becomes faded, the owner must re-tattoo the animal in the same ear with the same tattoo.

##### (b) For Animals Identified by Eartags

Prior to leaving individual pens or ties, all calves identified by eartags must be identified in both ears with tags approved by the Association's Board of Directors. These tags will include an American ID number, state of origin, and herd management number. No two animals in the same herd of the same sex may have the same herd management number.



Allflex Tamperproof™ Ear Tags

*Picture: Button/Button pair*

It is the owner's responsibility to maintain eartags in the ears of each animal owned, and when a tag is lost, the owner must contact the Association and order a replacement tag.

When an animal enters the herd with a duplicate herd management number, the owner must contact the Association and order replacement tags for one of the animals. The replacement tags will retain the animal's prior American ID number, but must have a herd management number that is unique to the new herd.

Tags approved by the Association's Board of Directors are:

Allflex Tamperproof™ Ear Tags

information. They can be ordered as inventory tags or as custom-printed tags following registration.

#### **Can maxi tags be paired with button or large tag backs?**

Yes. Remember, the one or two blank lines on the maxi tags can be used by producers to hand-write birth date, sire and/or dam information.

#### **Can I order other tag colors?**

White and yellow will be the only colors offered initially. Other colors may be added if there is enough demand.

#### **Will there be a minimum order?**

No, but because of shipping costs, the suggested minimum order is ten (10) tag pairs, or enough to identify 10 animals. You will be able to order replacement tags on an individual basis.

#### **You mentioned custom tags. What are these?**

As noted previously, the Allflex maxi tags are large enough to allow birth dates, sire IDs, and/or dam IDs to be printed on them. These three pieces of information aren't known when the inventory tags are ordered, but they are known at the time of registration.

When animals are registered, you can then order custom tags, which might include any or all of birth date (*month, day and year as either MM/DD/YY or MM/YY*), sire ID (*NAAB code or short name*), and dam ID (*computer control number, CCN; or barn name*).

If you would use custom-printed tags, then you would want to

use button tags as the registration ID. There's no need to put a more expensive tag in at birth if a custom-printed tag will be added following registration.

#### **What should I do if a cow loses a tag?**

You will have to order a replacement tag and re-tag the animal.

#### **Do I have to use Allflex's tags?**

Yes, but you are not required to purchase them through the AJCA. There are other sources of these tags.

#### **I show my Jerseys and don't want to take them into the ring with big tags in their ears. If we go to this system, would it be possible for me to take the tags out for the show and put them back in afterwards?**

No. If you take them out, the animal would lose her permanent identification. If you are going to show, the best procedure will be to tattoo the animal before removing the tags and notify the AJCA of the tattoo. The AJCA will then issue a corrected registration certificate. The correction fee of \$5.00 will be charged.

#### **Can I continue to tattoo calves?**

Yes. The tagging option is just that, an alternative. The rules for tattooing remain unchanged (*see summary above*).

#### **I like the tags, but I will continue to tattoo. Can I order custom tags from AJCA?**

Certainly. Just visit the AJCA Herd Services section of USJersey.com.